



WAITAKERE OUTRIGGER CANOE CLUB INCORPORATED

Kia Ora,

WOCC Double Header returns bigger and better, hosting its annual regatta, "TnT Double Header".

Our event is Smoke-Free, Vape Free and Alcohol-Free.

The W12 challenge caters for paddlers aged 13 years to Seniors, novice paddlers and mixed teams. Racing 10km from the WOCC boat ramp across to Pt Chevalier Beach, collect your flag and return to the WOCC boat ramp.

EVENT & RACE SCHEDULE

7:00AM - Waka Drop off & lash waka (Instructions for earlier drop offs below)

7.30AM - Registration and safety checks. (Admin situated in the BBQ area)

9:00AM - Karakia and Race & Safe briefing for both races

9:30 AM- Race One Start

- Juniors, Novice & Ladies

10:30AM - Race & Safety briefing

11:00AM- Race Two Start

- Seniors & Mixed

1:00PM - Prize Giving

FREE SOUP AND SAUSAGE SIZZLE AFTER EACH RACE FOR REGISTERED PADDLERS.

Non-paddlers are free to purchase kai on-site.

We will have a coffee cart available for all attending on the day.

HANGI

Pre-Sales, \$18 each or TWO for \$30 please email jadebidois@gmail.com OR 021556604 to place your order.

- *Name of the person collecting hangi*
- *Number of hangi you are ordering*

Please do not pay hangi money into the WOCC club account.



QR Code For Hangi

RACE COST

W12 Juniors J16 - J19 (aged 13 - 18) \$20

W12 Seniors \$20

- If Juniors and Seniors are mixed in teams, Papa Dan kindly asks for your honesty. Please email waitakereocc@gmail.com so you are charged correctly.

ONLINE ENTRIES AND PAYMENT

- Online entries are to be completed using the Waka Ama NZ online entry system.
- All entries are to be completed through your club admin - contact your club admin to process your entry
- No entries will be accepted on the day
- Entries Close Monday 18/05/2026
- Rosters Close Wednesday 20/05/2026
- Once entered, payment can be made online to
 - Waitakere Outrigger Canoe Club
 - 38 - 9014 - 0384894 - 00
 - Please use your Club, Team Name and Division as your reference

SAFETY REQUIREMENTS

- All waka must be safety checked - **Please bring your own trolleys**
- All J16, J19 and Novice paddlers **MUST** wear life Jackets.
- All Junior, and Senior (Open and above) must have the following safety equipment for their races
 - PFD - Personal Floatation Device (Per Person)
 - Bailers
 - Flare or cell phone in waterproof case
 - Spare Paddle - 2 for W12
 - Spray Skirt - Optional
 - Tow Rope (W12)
- Safety Checks will be completed near the boat ramp where all waka will launch
- First Aid available at the Admin

PARKING & FURTHER INFORMATION

Street parking outside WOCC is limited. Parking is available on the surrounding streets of Bridge Avenue.

No vehicles are to be parked in the Te Atatu Boat Club/ WOCC area on race day.

TOILETS

Please ask the admin as to where toilets are situated.

EARLY WAKA DROP-OFFS:

For those wanting to drop Waka off on Friday, Please contact Papa Dan at 0210709535. Saturday arrivals, WOCC members will be on the road to direct you. Once the trailer and waka are dropped in the allocated area please return your car to be parked outside on the road.

RUBBISH & RECYCLING

We encourage you to take your rubbish home with you. However, WOCC will have bins available in the BBQ area.

PLAYGROUND

Te Atatu Boat Club and WOCC have a playground area for Tamariki. Please ensure to watch your Tamariki in this area. There is access to stairs from the playground area, please ensure all Tamariki refrain from playing on the stairs, cones will be placed at the bottom of the stairs for the safety of Tamariki.

GAZEBOS

Unfortunately, we can not have gazebos put up on our club lawn. Seating and tables are available on the club deck and we also encourage you to bring picnic seats.

PONTOONS AND BOAT RAMPS

Our boat ramp is open to the public during our race. Please be careful of your surroundings as vehicles and boats come and go right alongside our BBQ area, look out for our Tamariki. Members of WOCC will be in hi-vis and will advise the no-go areas, and what areas you have access to in support of your teams.

HEALTH AND SAFETY

This wouldn't be a safety plan without a covid section.

- If you're sick please stay home
- Wash and Sanitise, You know the drill! Hand soap available in club toilets, however if you use the public toilet outside WOCC compound, please ask Admin for hand soap if using this toilet.
- Lots of hand sanitiser available at admin

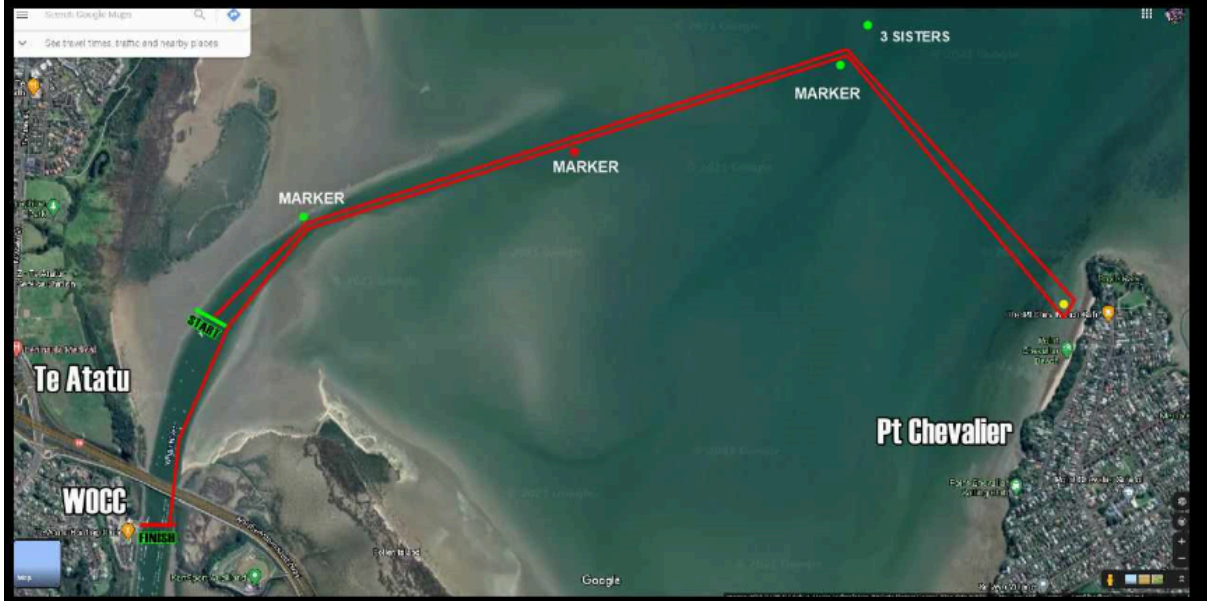
INDIVIDUAL & TEAM WAIVERS

- Team waivers must be completed by all paddlers/teams, and available at admin on race day.
- All paddlers U18 must have their waiver signed by their parent/guardian.
- Waivers can be sent to waitakereocc@gmail.com or handed in at admin on arrival.
- Team waivers can be found on our event page on the Waka Ama NZ website.

Course A:

WAITAKERE TNT DOUBLE HEADER

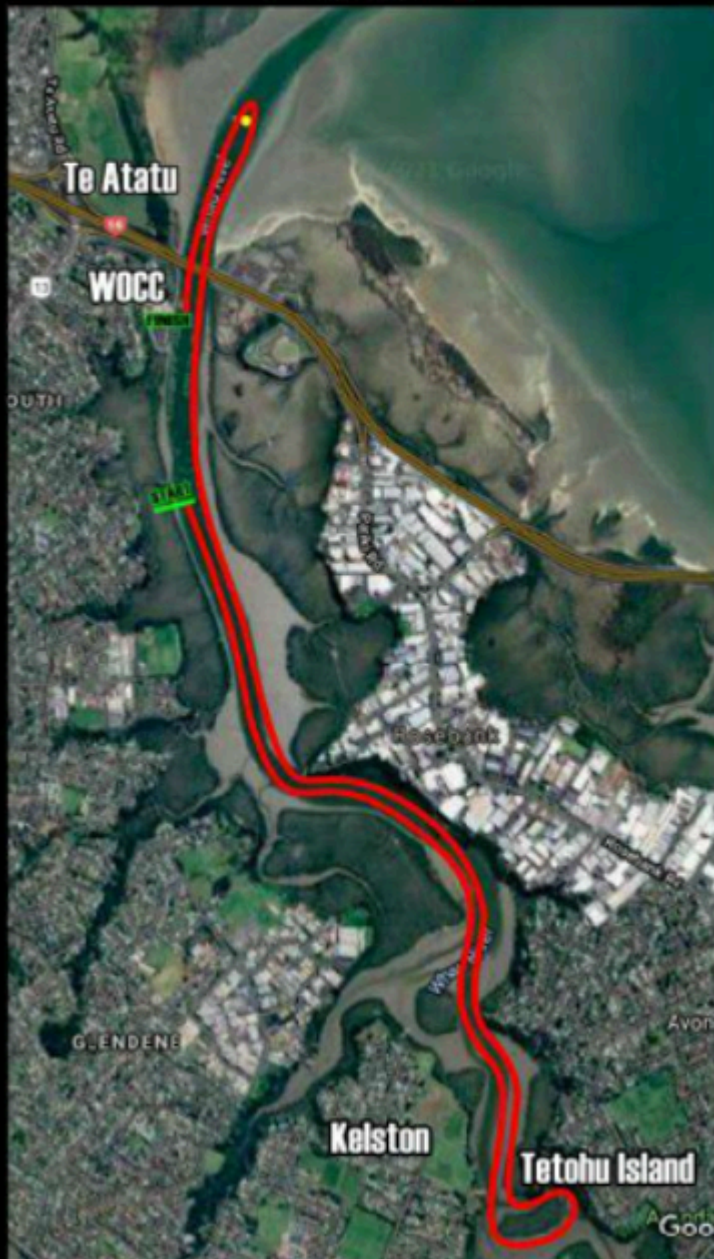
COURSE A



Course B:
Alternative Route subject to weather:

WAITAKERE TNT DOUBLE HEADER

COURSE B



Please do not hesitate to contact Papa Dan at 0210709535 or Cherin at 0224924385 for further information or Email waitakereocc@gmail.com.

On behalf of WOCC and our TnT Crew, THANK YOU for your ongoing support and we look forward to hosting you at our out W12 "TnT Double Header" Race.

Waitakere Outrigger Canoe Club.

